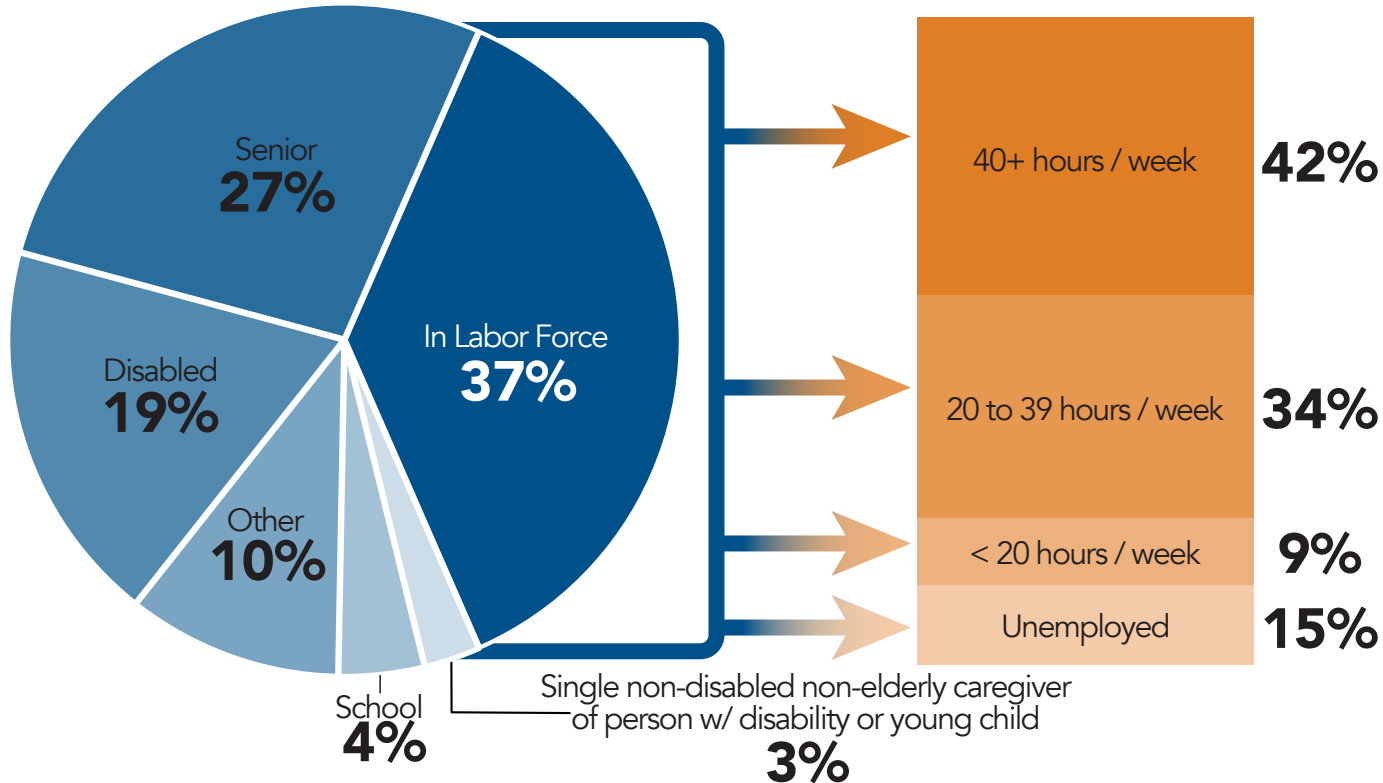


THE GAP

EXTREMELY LOW-INCOME RENTER HOUSEHOLDS



Note: Mutually exclusive categories applied in the following order: senior, disabled, in labor force, enrolled in school, single adult caregiver of a child under 7 or of a household member with a disability, and other. "Senior" means householder or householder's spouse (if applicable) is at least 62 years of age. "Disabled" means householder and householder's spouse (if applicable) are younger than 62 and at least one of them has a disability. "Working hours" is usual number of hours worked by householder and householder's spouse (if applicable). "School" means householder and householder's spouse (if applicable) are enrolled in school. Fifteen percent of extremely low-income renter households include a single adult caregiver, 55% of whom usually work more than 20 hours per week. Eleven percent of extremely low-income renter householders are enrolled in school, 48% of whom usually work more than 20 hours per week. Source: NLIHC tabulation of 2020 5-Year ACS PUMS data.