



NATIONAL LOW INCOME
HOUSING COALITION

Coronavirus, Disasters, Housing and Homelessness

Hosted by NLIHC and the
Disaster Housing Recovery Coalition
October 19, 2020

Agenda



Welcome & Updates

- Paul Kealey, NLIHC

Field Updates

- Shawnel Willer, North Dakota Housing Finance Agency
- Gladys Cook, Florida Housing Coalition
- Eric Shupin, Citizens' Housing and Planning Association (MA)

Framework for an Equitable COVID-19 Homelessness Response's "Marginalized Communities Briefs"

- Sarah Hunter, National Innovation Service

Nonpartisan Voter Engagement Efforts

- Joey Lindstrom, NLIHC

Tracking State and Local Emergency Rental Assistance Programs

- Andrew Aurand & Rebecca Yae, NLIHC

Latest from Capitol Hill on COVID-19 Relief & Disaster Supplemental Bills

- Sarah Saadian, NLIHC

Welcome & Updates



Paul Kealey

Chief Operating Officer

National Low Income Housing
Coalition

pkealey@nlihc.org

www.nlihc.org

Field Updates



Shawnel Willer

Continuum of Care Coordinator

North Dakota Housing Finance
Agency

smwiller@nd.gov

www.nlihc.org

Field Updates



Gladys Cook

*Resilience and Recovery Director and
Technical Advisor*

Florida Housing Coalition

cook@flhousing.org

www.nlihc.org

Field Updates



Eric Shupin

Director of Public Policy

Citizens' Housing and Planning
Association

eshupin@chapa.org

www.nlihc.org

Framework for an Equitable COVID-19 Homelessness Response's "Marginalized Communities Briefs"



Sarah Hunter

*Managing Director, Center for
Housing Justice*

National Innovation Service

sarah.hunter@nis.us

www.nlihc.org

THE FRAMEWORK FOR AN EQUITABLE COVID-19 RESPONSE

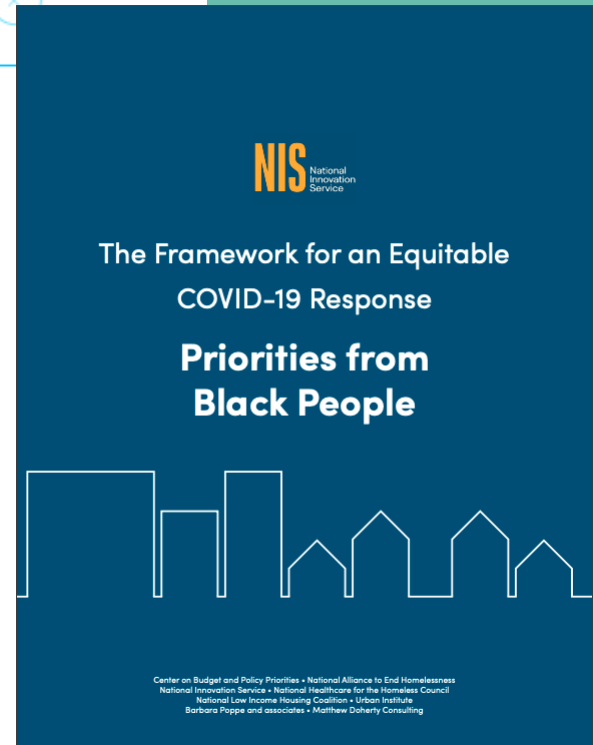
What We Heard about COVID-19, Homelessness, and Services from People with Lived Experience



<https://www.nis.us/covid-19-response-introduction>

– Briefs

- Priorities from Asian Americans
- Priorities from Black People
- Priorities from Latinx People
- Priorities from Lesbian, Gay, Bisexual, Queer (LGBQ)/Trans* People
- Priorities from Native-Indigenous People
- Priorities from Pacific Islanders
- Priorities from People with Incarceration Histories
- Priorities from People Involved with Public Systems
- Priorities from People Living with Disabilities
- Top Priorities and Actions Across Communities



Top Priorities and Actions Across Communities

Top 4 Policy Shifts



1. Implement a crisis response that ends the use of large congregate shelters and creates dignity-based, safe, temporary crisis options as a bridge to long-term housing.
2. Build, support, and fund dignity-based services led by the communities most impacted by homelessness.
3. Develop affordable housing in the most impacted communities and target housing and rental assistance to those most impacted by structural inequity.
4. Divest from policing, remove police from the homelessness response system, and invest a portion of the funds in housing and services to communities most impacted by police brutality.

Nonpartisan Voter Engagement Efforts During COVID-19



Joey Lindstrom

Director for Field Organizing
National Low Income Housing
Coalition

jlindstrom@nlihc.org

www.nlihc.org

OUR HOMES, OUR VOTES

2020

BECAUSE HOUSING IS BUILT WITH BALLOTS



NATIONAL LOW INCOME
HOUSING COALITION

Housing Advocates and the November Election

19 October 2020

Engaging Voters and Candidates

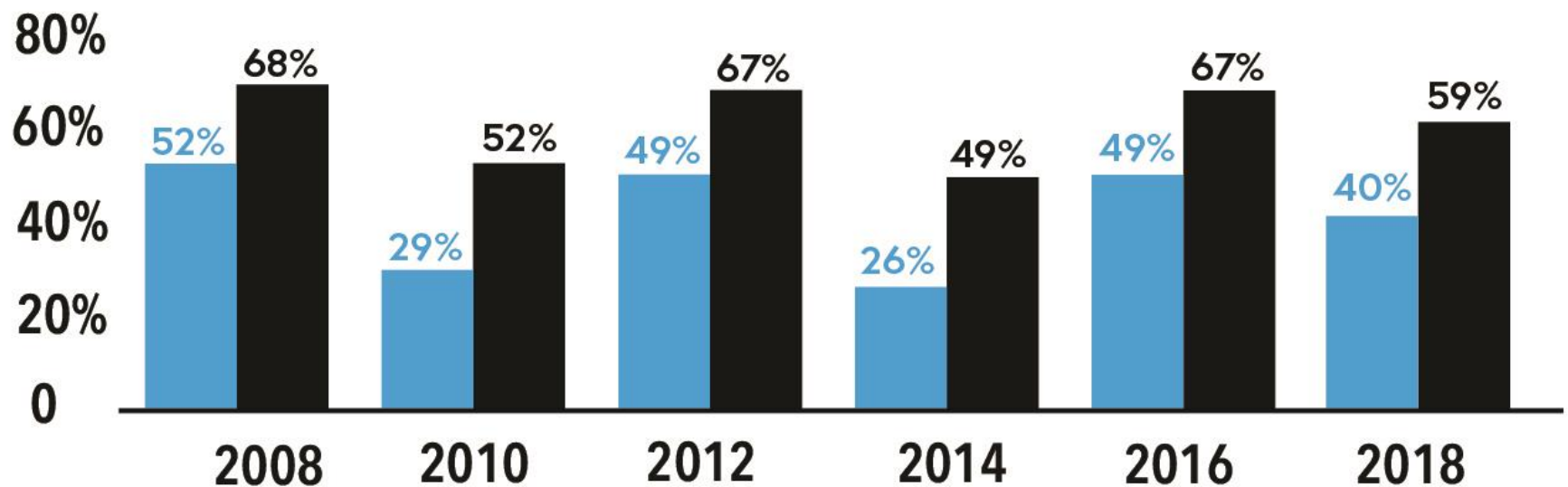


Our Homes, Our Votes is NLIHC's voter engagement effort focusing on increasing voter registration and turnout among low-income housing renters and advocates.

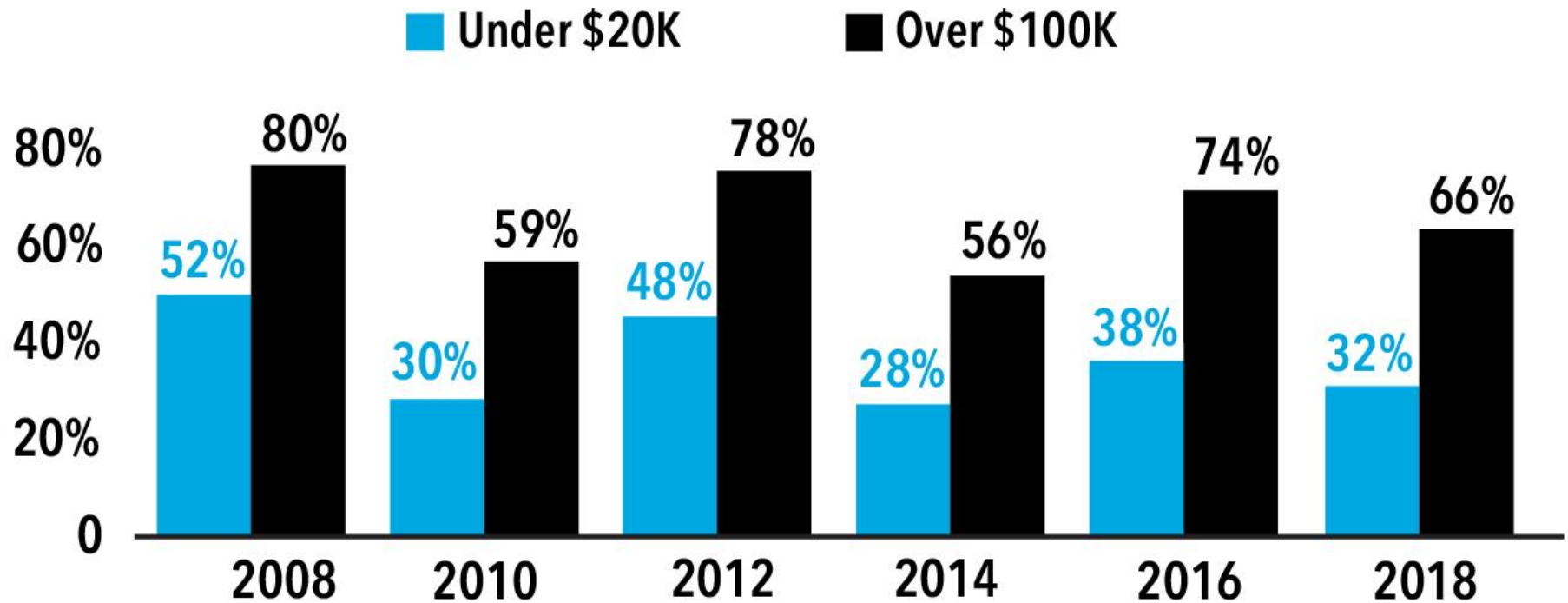


U.S. Citizens Who Reported Voting in National Elections by Housing Tenure (2008-2018)

■ Renters ■ Homeowners



U.S. Citizens Who Reported Voting in National Elections by Family Income (2008-2018)



83%

of the public agrees that elected officials are not paying enough attention to the cost of housing and the need for more affordable housing.



NATIONAL LOW INCOME
HOUSING COALITION

Source: Public Opinion Poll Feb 25-Mar 4, 2019 Hart Research Associates

76%

say they are more likely to vote for a candidate that has a detailed plan for making housing more affordable.



Join as an Affiliate



Benefits of Joining Our Homes, Our Votes

- Swag package
- Use of the logo and images on co-branded materials
- Amplification through media engagement
- Guidance and assistance from NLIHC staff



Join the Housing Providers Council



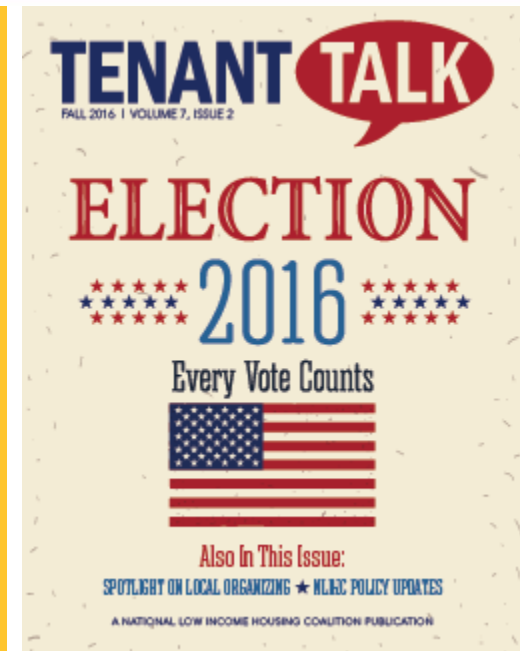
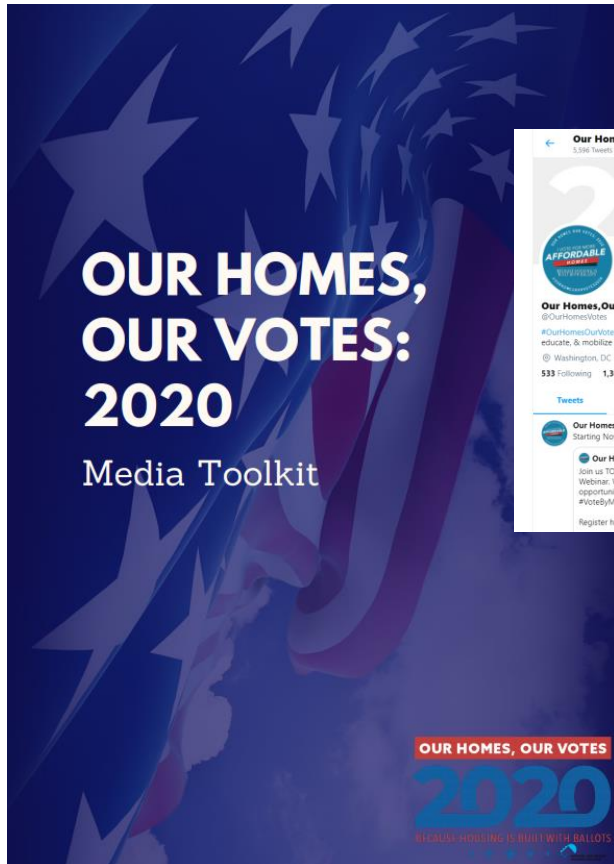
**Goal: 1 million
subsidized rental
homes!**

- Commitment to being nonpartisan
- Provide a contact person for updates and training efforts
- Participate at any level – no cost for involvement
- Sign up here:

<https://nlihc.wufoo.com/forms/z1gmuaor1sgqvzg/>



Communications Platforms



Template Materials

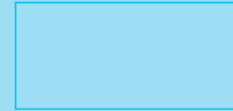
OUR HOMES, OUR VOTES

2020

BECAUSE HOUSING IS BUILT WITH BALLOTS



I AM A
RENTER
AND I VOTE



POLLING LOCATION

IS OPEN FROM TO

#VOTERSLIVEHERE



State-Merged Materials



Materials that include state-specific information

- Will be available as flyers, posters, and door-hangers
- Can be modified to include QR codes
- Localized versions with polling locations can be merged as well.

The flyer has a red-to-blue gradient background. At the top, the text "YOUR VOTE MATTERS" is displayed, with "YOUR" in blue and "VOTE MATTERS" in white with a red and white striped pattern. Below this, the word "Michigan" is written in a red, sans-serif font. A list of voting information is presented with white star icons on a dark blue background. At the bottom, there is a footer with a website link and a small version of the "OUR HOMES, OUR VOTES 2020" logo.

YOUR VOTE MATTERS
Michigan

- ★ **Voter Registration Deadline:**
Oct. 19 – online or by mail; Nov. 3 – in person (not at polling place)
- ★ **Vote By Mail Allowed:**
Yes, no excuse needed
- ★ **Need to Apply for Mail Ballot:**
Yes - online, in person or by mail. Must be received by Oct. 30, 5PM
- ★ **Mail Ballot Deadline:**
Received Nov.3, 8PM
- ★ **In Person Early Voting:**
Yes
- ★ **Polls Open From 7AM - 8PM**

For more information visit www.ourhomes-ourvotes.org

OUR HOMES, OUR VOTES
2020
BECAUSE HOUSING IS BUILT WITH BALLOTS

Protect the Vote!



1-866-OUR-VOTE

Voter protection hotline

- **All voters should reach out if they face voter intimidation, challenges based on eligibility, or if they see evidence of misinformation**
- **Remember! All voters can vote if they are in line by poll closure times**
- **Voters should cast provisional ballots if they are not provided with a conventional ballot**

More information



www.ourhomes-ourvotes.org

#OurHomesOurVotes2020



**OUR HOMES, OUR VOTES:
2020**

VOTER INFORMATION BY STATE

VOTER & CANDIDATE ENGAGEMENT TOOLKIT

Tracking State & Local Emergency Rental Assistance Programs



Andrew Aurand

Vice President for Research

National Low Income Housing Coalition

aurand@nlihc.org

Rebecca Yae

Senior Research Analyst

National Low Income Housing Coalition

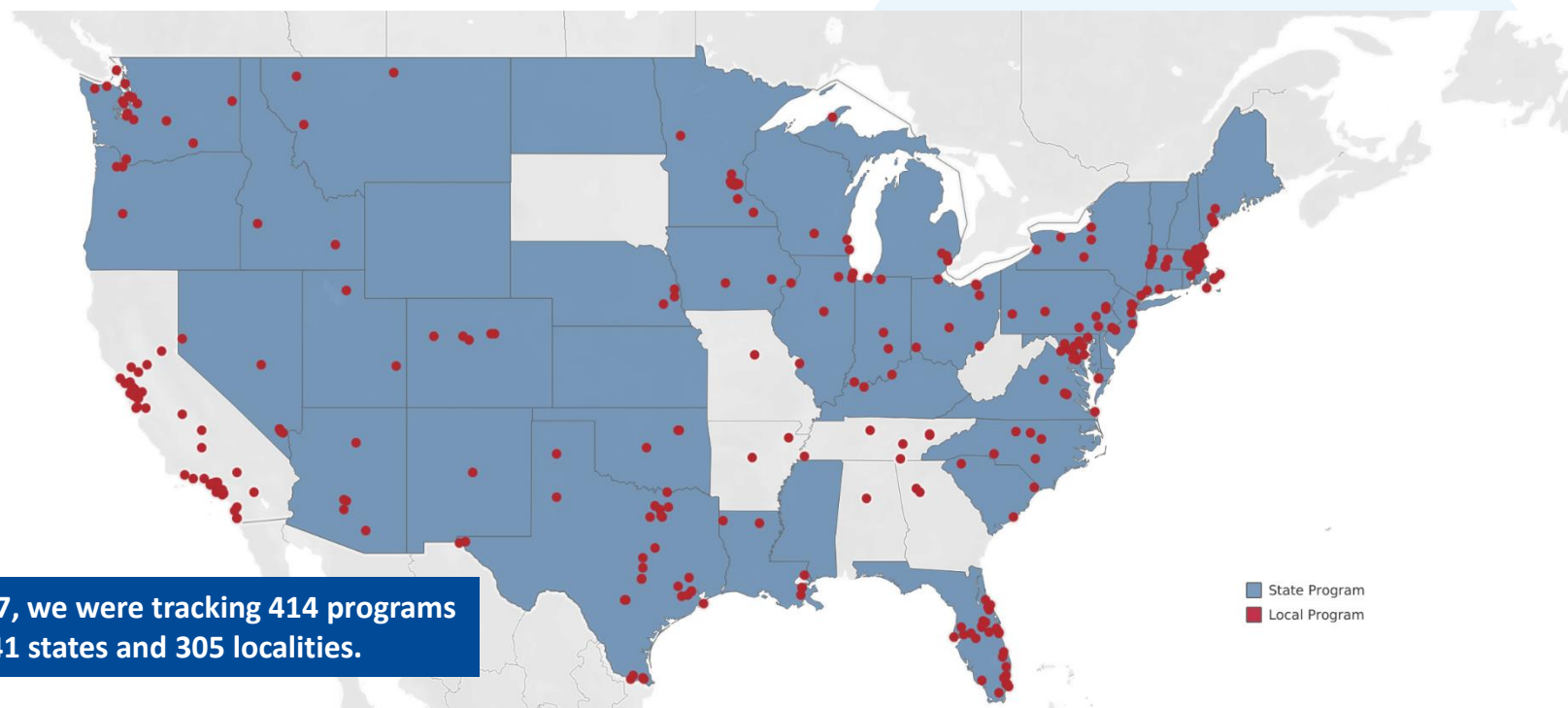
ryae@nlihc.org

www.nlihc.org

Emergency Rental Assistance Programs

Andrew Aurand & Rebecca Yae
National Low Income Housing Coalition

Where are rental assistance programs enacted?

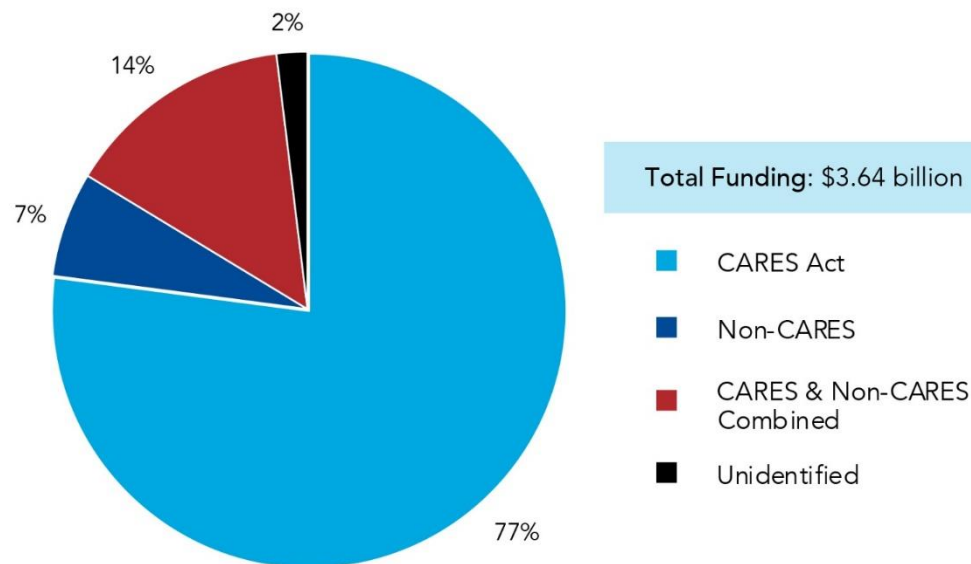


© 2020 Mapbox © OpenStreetMap

For the interactive map and table, visit: <https://nlihc.org/rental-assistance>

Where is funding coming from?

Emergency Rental Assistance by Funding Stream

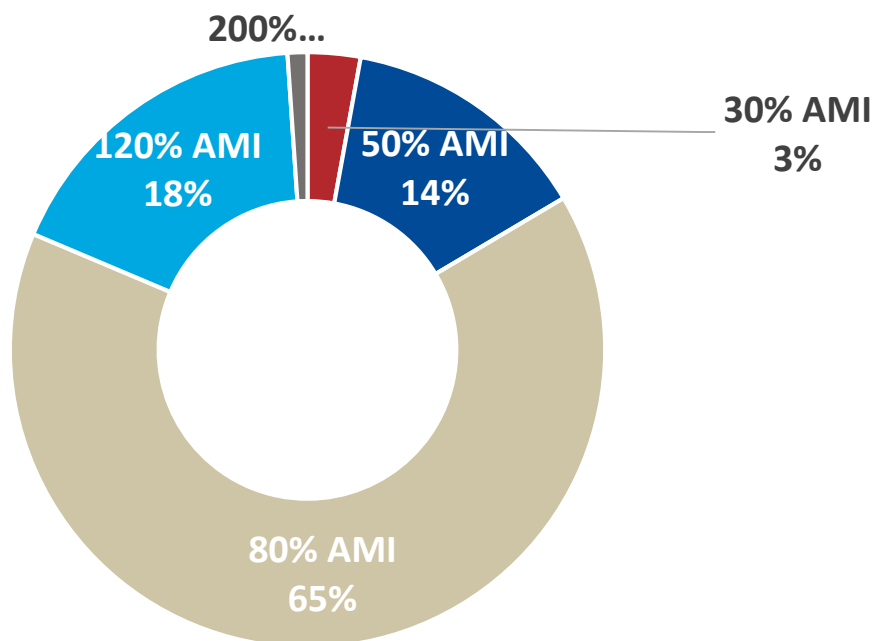


What are common eligibility criteria?

- Most programs ask households to demonstrate COVID-related hardship, income eligibility, and proof of residency within the jurisdiction.

Select Eligibility Requirements	
Demonstrated COVID hardship	83%
Income targeting	81%
Proof of residency	73%
<i>Note: N=388. The number of programs and information about them will continue to evolve. Analysis includes enacted programs as of October 7, 2020.</i>	

Programs by Maximum Income-Eligibility



Only 3% of programs using \$80 million of funding specifically target extremely low-income renters (30% AMI).

Notes: AMI = Area Median Income. N=279.

Funding is entirely inadequate



- The magnitude and duration of need for assistance has greatly outpaced the available funding
 - 30% of all programs are closed.
 - Over half of all programs used a first-come, first-served or lottery systems to select recipients of aid.
 - 82% of programs are designed for short-term relief (3 months or less).

Areas for further exploration

- Program administrators must navigate difficult trade-offs
 - Intake assistance and administrative capacity
 - Documentation requirements and auditing risk
 - Concessions to protect tenants and landlord participation

Moving Forward



- Look out for our upcoming research note
- Check out the rental assistance database:
<https://nlihc.org/rental-assistance>
- We update the database weekly
 - Have we missed any programs you know of?

Email us: aaurand@nlihc.org or ryae@nlihc.org

Latest from Capitol Hill on COVID-19 Relief and Disaster Supplemental Bills



Sarah Saadian

Vice President of Public Policy

National Low Income Housing
Coalition

ssaadian@nlihc.org

www.nlihc.org

Resources

[Responding to Coronavirus
\(https://nlihc.org/responding-
coronavirus\)](https://nlihc.org/responding-coronavirus): Recommendations for
Congress

[Coronavirus and Housing/
Homelessness
\(https://nlihc.org/coronavirus-and-
housing-homelessness\)](https://nlihc.org/coronavirus-and-homelessness): National and
Local Updates