



NATIONAL LOW INCOME
HOUSING COALITION

The State of Disaster Housing Recovery Tools and Resources Needed to Ensure Equitable Recovery

Congressional Briefing

12 January 2018

SPEAKERS



- **Sarah Mickelson**, National Low Income Housing Coalition
- **Suzanne Cabrera**, Florida Housing Coalition, and Housing Leadership Council of Palm Beach County
- **Michelle Norris**, National Church Residences
- **Francisco Rodriguez**, Coalicion de Coaliciones
- **Christina Rosales**, Texas Low Income Housing Information Service (Texas Housers)



NATIONAL LOW INCOME
HOUSING COALITION

Sarah Mickelson

Director of Policy,

National Low Income Housing Coalition

smickelson@nlihc.org

NLIHC
www.nlihc.org

TOP PRIORITIES FOR ANY DISASTER RECOVERY PACKAGE





NATIONAL LOW INCOME
HOUSING COALITION

Suzanne Cabrera

Board of Directors, Florida Housing Coalition
President and CEO, Housing Leadership Council
of Palm Beach County
scabrera@hlcpcb.org

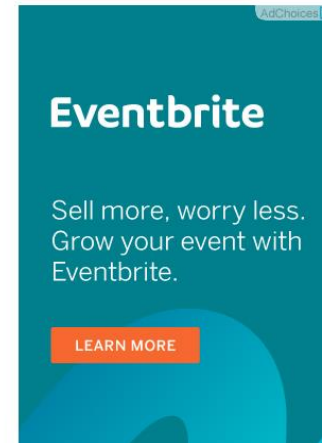
Disaster Housing Assistance Program



Commentary: Bring HUD's disaster-relief housing program to Florida



Complex insurance claims are often policyholders' nightmare as hurricanes Harvey and Irma stress availability of insurance adjusters



ORLANDO SENTINEL

Sign up now for our NEW twice-weekly Sentinel Insight newsletter



Other Housing Resources





NATIONAL LOW INCOME
HOUSING COALITION

Michelle Norris

Executive Vice President of External
Affairs and Strategic Initiatives,
National Church Residences

mnorris@nationalchurchresidences.org

Puerto Rico Stronger



https://youtu.be/Yqj63I_j5X4



NATIONAL LOW INCOME
HOUSING COALITION

Francisco Rodriguez
President and CEO
Coalicion de Coaliciones
francisco@coaliciondecoaliciones.org

Challenges Unique to Puerto Rico

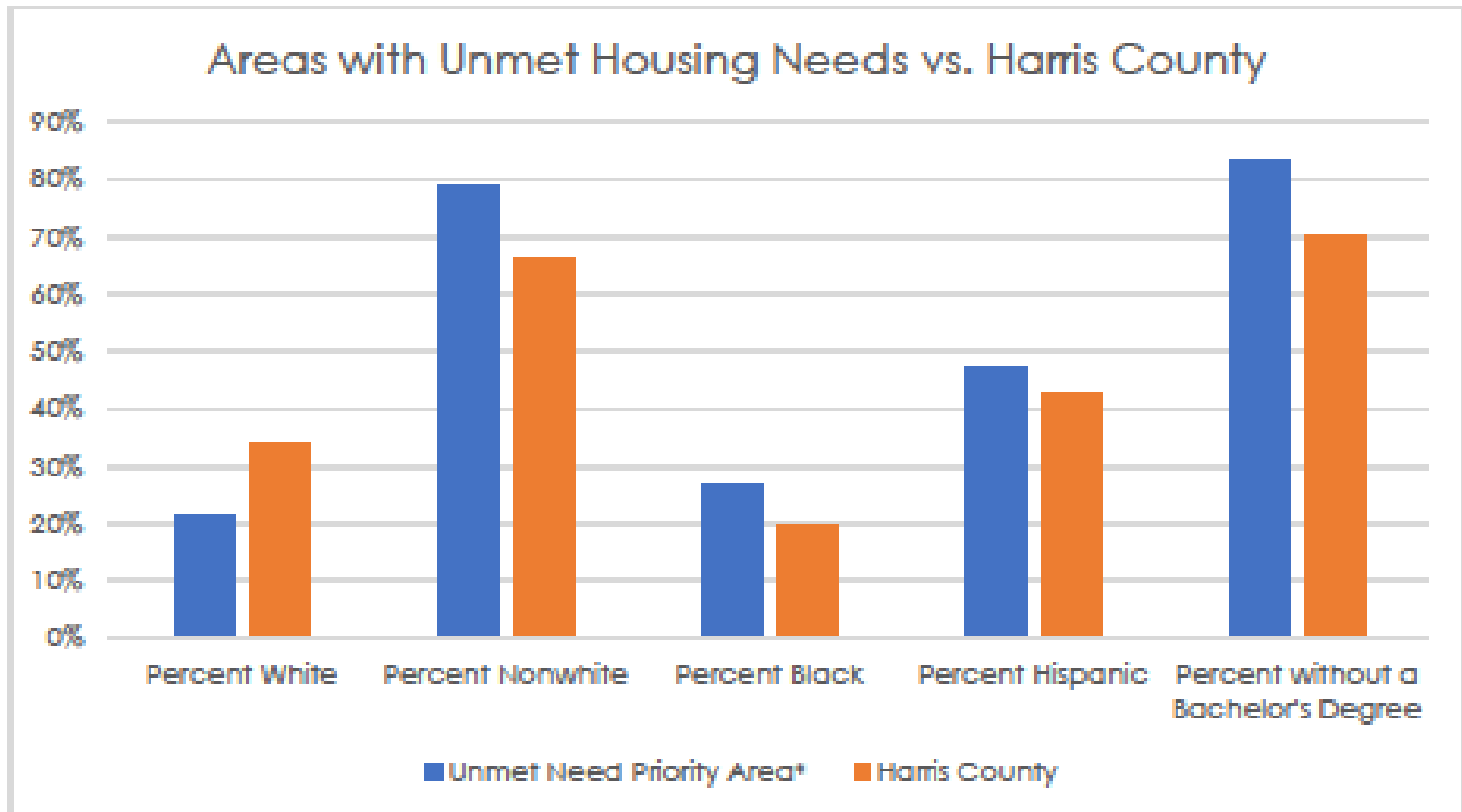




NATIONAL LOW INCOME
HOUSING COALITION

Christina Rosales
Communications Director
Texas Housers
christina@texashousing.org

The Need for Data

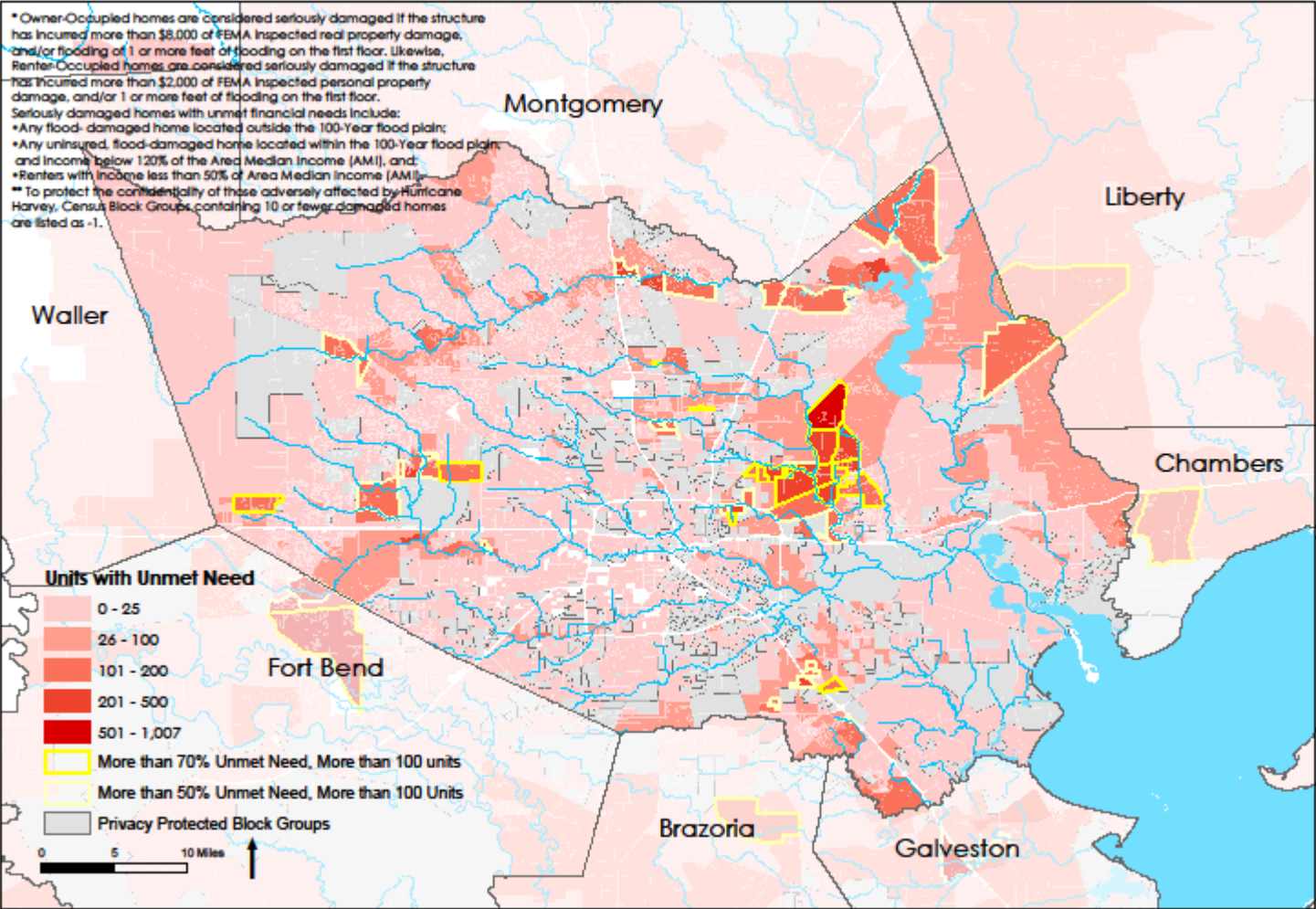


*This area represents all block groups in Harris County with more than 100 seriously damaged units, and where more than 50% of households have unmet need, as defined by HUD.

Source: HUD (11/2017), ACS 2012-2016 5-Yr Estimates

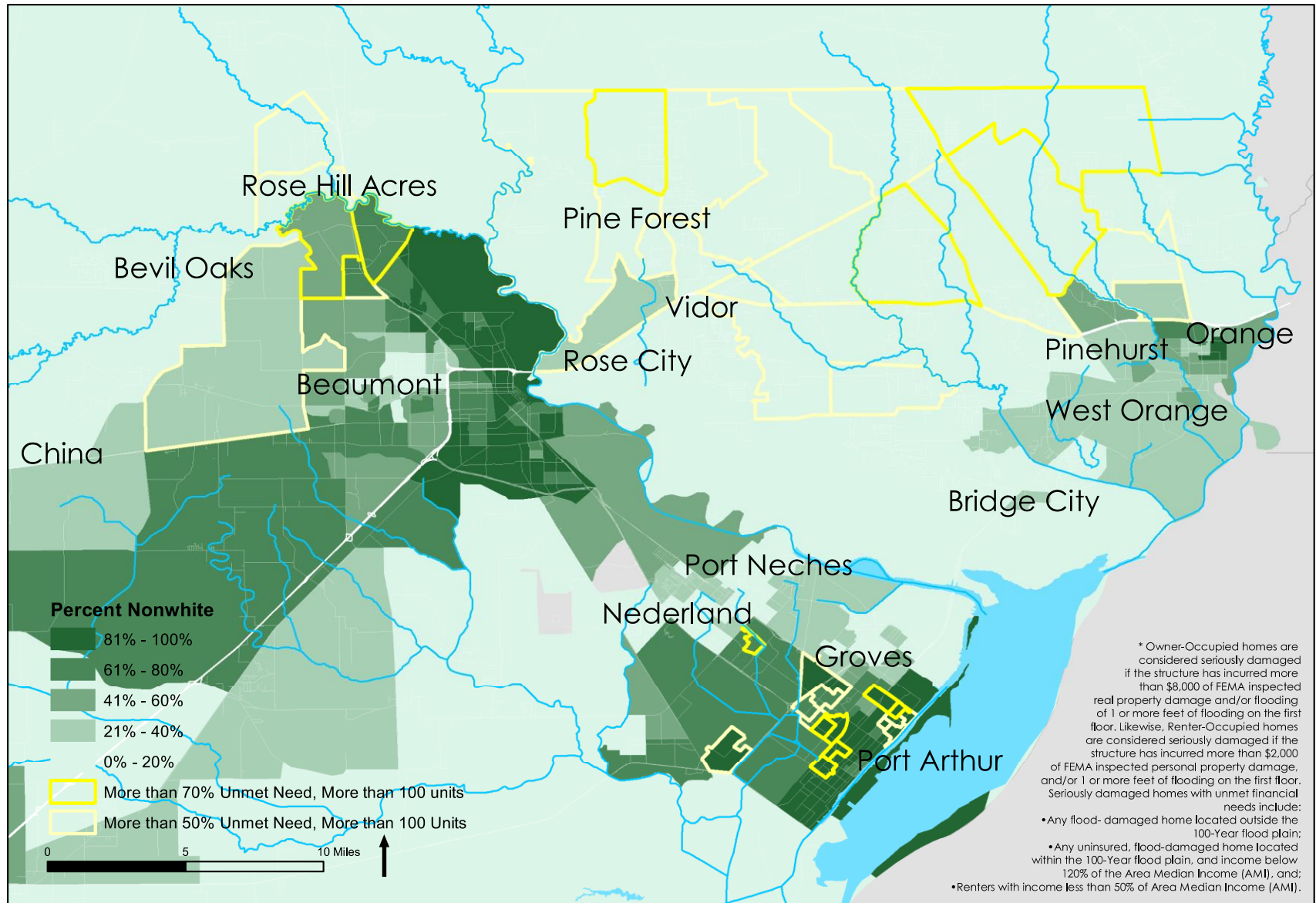
Seriously Damaged Housing Units with Unmet Need *

By Block Group - Harris County (Source: Housing and Urban Development, 2017)



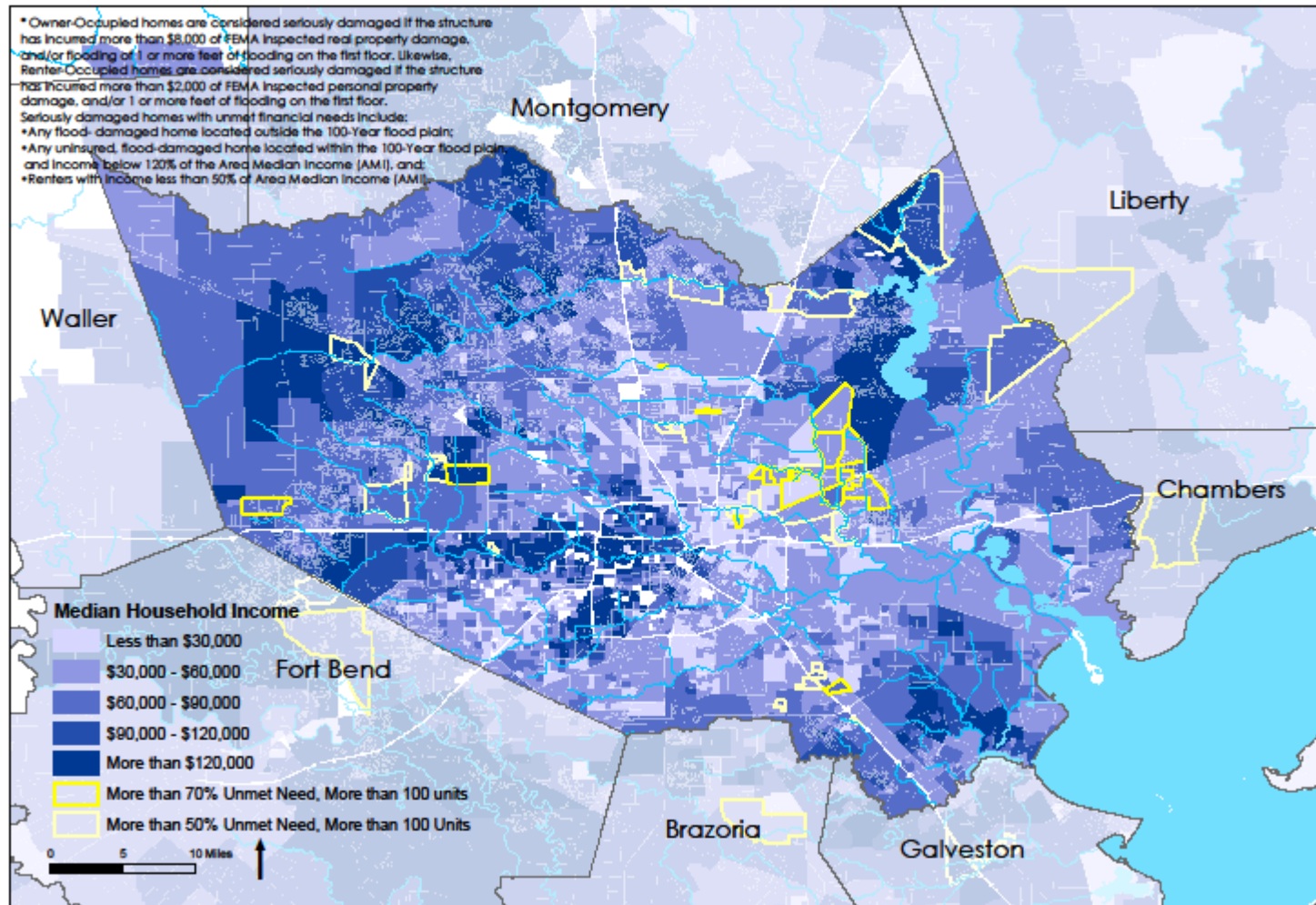
Seriously Damaged Housing Units with Unmet Need *

By Block Group - Golden Triangle (Source: Housing and Urban Development, 2017, ACS 2012-2016 5-Yr Estimates)



Median Household Income and Housing Units with Unmet Need *

By Block Group - Harris County (Source: Housing and Urban Development, 2017, ACS 2012-2016 5-Yr Estimates)



Questions?

Resources



Top Priorities for Any Disaster Recovery Program

<http://nlihc.org/sites/default/files/Disaster Recovery Supplemental 12052017.pdf>

For more information



Sarah Mickelson, Director of Public Policy

smickelson@nlihc.org

**Debra A. Susie, Disaster Housing Recovery
Coordinator, 202-507-7446**

dsusie@nlihc.org

NLIHC
www.nlihc.org